

sygn  -fi



The Next Generation Wireless System

Sygnof-i

The newest, incredibly powerful and easy to configure EN54-25 wireless system on the market today

- 🌀 **Sygnof-i is Eurotech's new wireless fire system technology.** Based on Eurotech's decades of expertise in wireless fire protection, it is a totally new protocol, wireless network and range of high-performance detection, control and alarm devices.

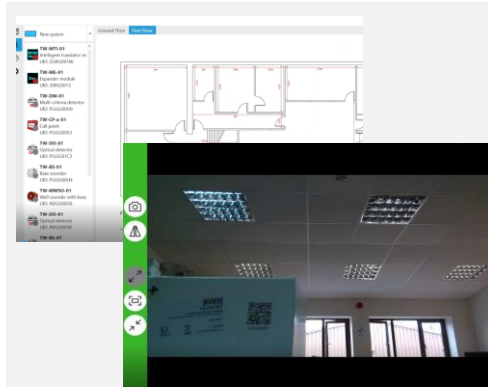


*The new **SygNEX software**, specifically designed for Sygnof-i, provides the most simple and intuitive way to install, commission and maintain the Sygnof-i fire system.*

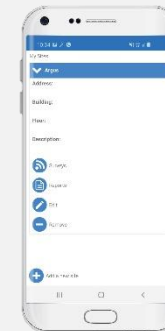
New SygNEX Software

System programming, made easy

- A full set of **advanced & user-friendly functions** is available for system set up, data acquisition, monitoring and reporting.
- SygNEX allows to realise accurate designs, save time - both during configuration and on-site - and easily monitor system status.



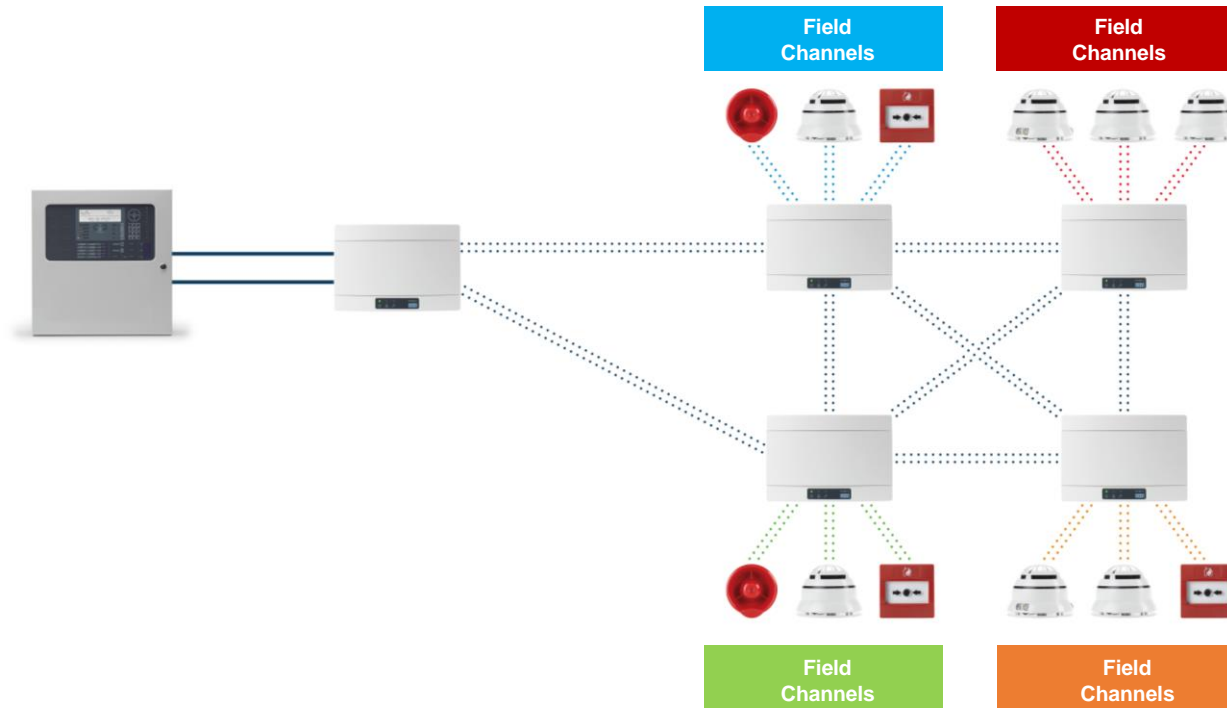
- Product **QR code scan** with PC camera for easy product import into the system.
- **Drag&Drop** devices on floorplans for simple setup.
- **ConfigWizard** button to auto-learn all your devices onto the system.
- **LiveDisplay** provides access to a real time visual display of the system status for fast control.



Simple **Site Survey** using your Android device, thanks to the new free app downloadable from the Google Store.

Network Optimiser Technology

Super-scalable, ultra-reliable technology

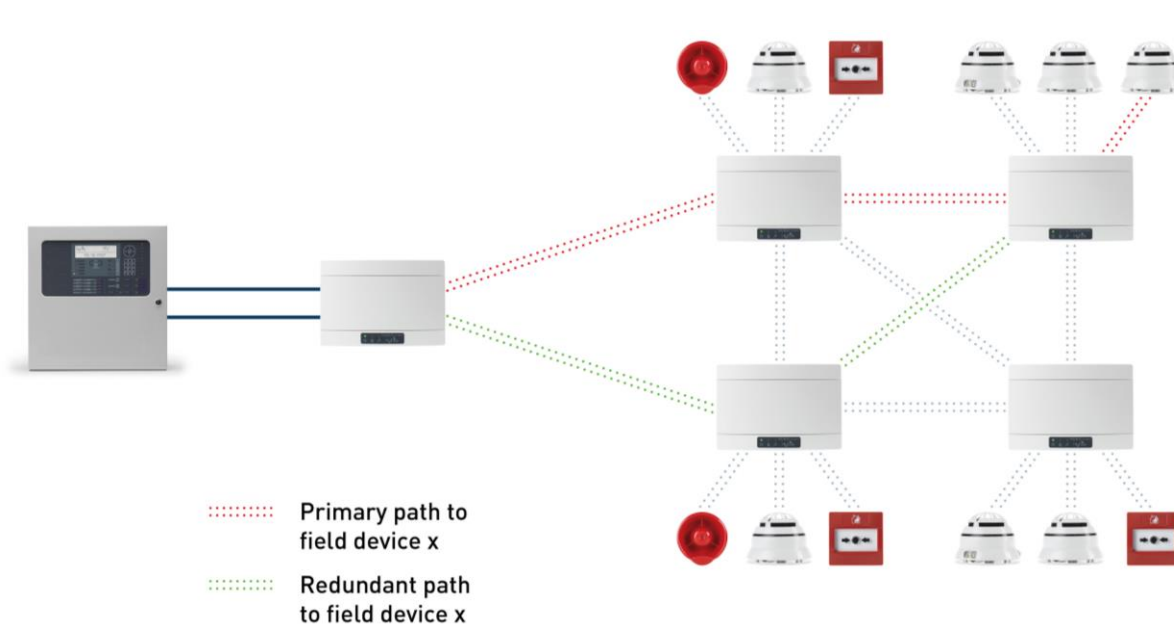


- Network Optimiser **effectively divides** infrastructure and field channels. You will not suffer any channel collision or interference existing wireless systems can struggle with.
- Network Optimiser also **checks and confirms that every packet of data is sent and received as expected**, ensuring absolute confidence in safety signaling.

- 60 communications channels** effectively divided by infrastructure (8 channel pairs) and field channels (22 channel pairs)
- Scalable architecture, easy to expand**

SafePath Mesh Expander Technology

The system always takes advantage of the best possible patterns

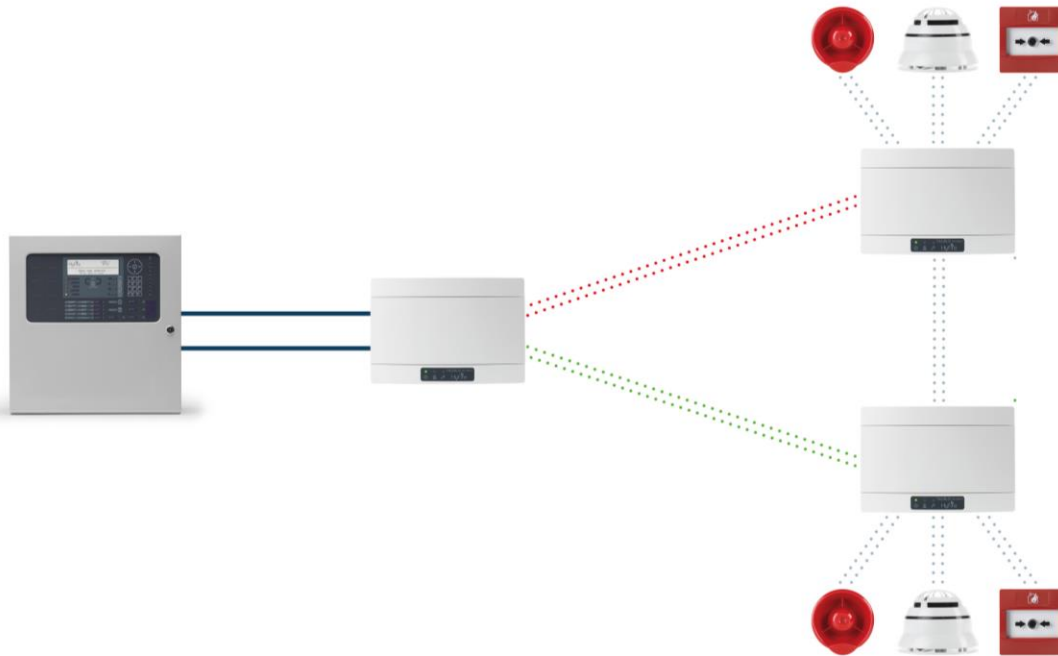


- **Redundant communication paths between expanders** are automatically identified and tested from the beginning, during system commissioning.
- If any Expander in the chain should fail, the transmission path finds an alternate route, ensuring communication continuity.

- Up to 15 Expanders per Translator
- Up to 32 devices per Expander

SafeSwitch Technology

Dual Channel Redundancy

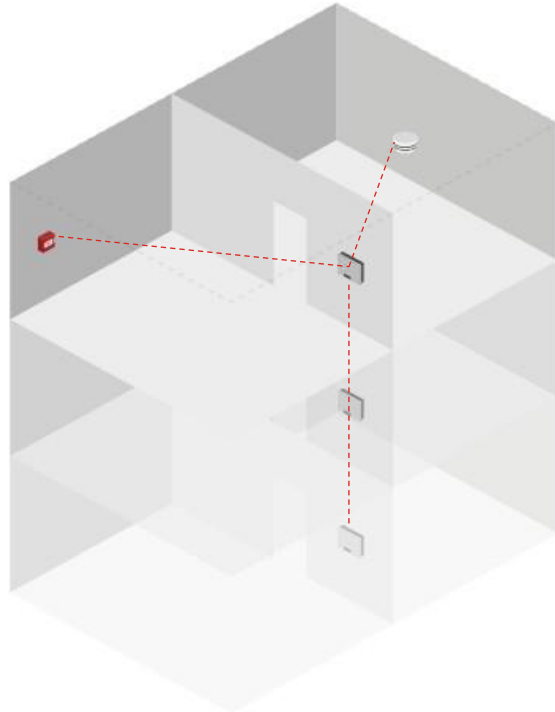


- The Sygno-fi system is built around **dual channel communication between devices.**
- If one channel is blocked, the other automatically takes over so that every message is correctly delivered when and where required.

• Applied to every Sygno-fi Device, Translator and Expander

Pathfinder Technology

Optimised Infrastructure Range

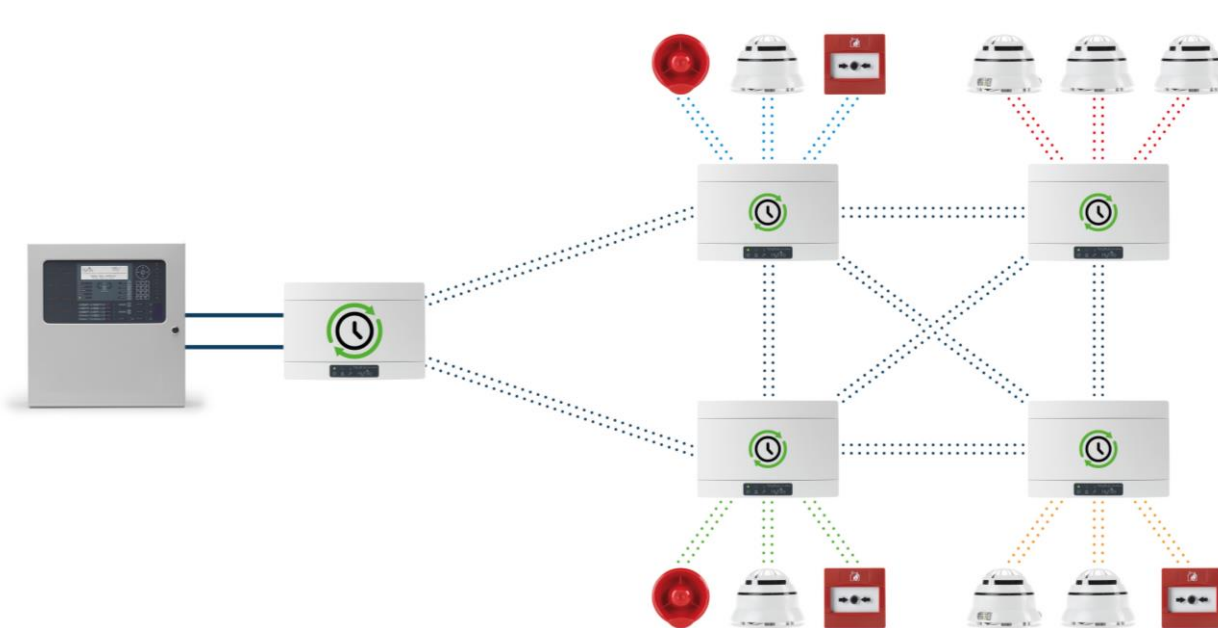


- Sygno-fi allows to cover easily large buildings. Our antenna is tuned for performance across frequencies and environments.
- Other systems rely on a huge amount of infrastructure and power to maintain range and safety, **Sygno-fi uses less equipment and less batteries.**

- Point to point transmission range is over 1km in open air
- Up to 8 expansion hops

Optimised Power Management

Synchronous Communication Protocol



- A **synchronised clock** among the field and infrastructure devices optimizes battery life.
- Each device uses a unique communication slot to transmit and receive messages without conflicts with other equipment.

- 10 year battery life for sensors, call points and inputs
- Up to 5 years for outputs, sounders and VADs (including weekly tests)
- Use of standard CR123A batteries across the range

Available Product Range

Detection Devices



Eurotech Sygno-fi Heat Detector



Eurotech Sygno-fi Multi-Sensor Detector



Eurotech Sygno-fi Optical Detector



Eurotech Sygno-fi Manual Call Point

Alarm Devices



Eurotech Sygno-fi Sounder Base



Eurotech Sygno-fi Sounder VAD Base
(Red or White Flash)



Eurotech Sygno-fi Wall Sounder



Eurotech Sygno-fi Wall Sounder VAD

Modules



Eurotech Sygno-fi Input Module



Eurotech Sygno-fi Output Module

Translator & Expander



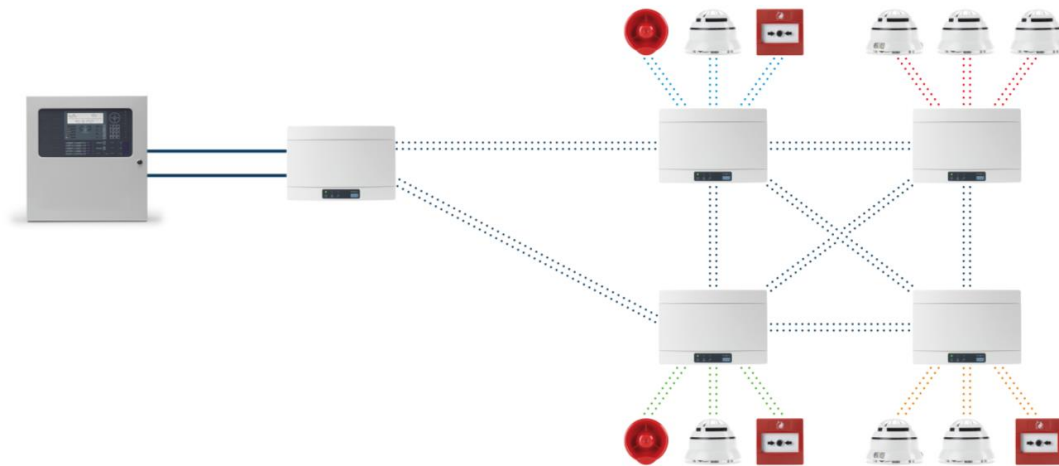
Eurotech Sygno-fi Translator Module



Eurotech Sygno-fi Expander Module

Sygn-fi Wireless Technology

Key Features



- Seamless combination with the Eurotech control panel
- SygnEX, new user-friendly software
- Network Optimiser Technology: 60 communications channels (infrastructure & field devices)
- SafePath Mesh Expander Technology: Redundant Communication Paths Between Expanders
- SafeSwitch Technology: Dual Channel Redundancy
- Pathfinder Technology: Optimised Infrastructure Range
- Optimised Power Management: Fully synchronised outputs with rapid reaction time and superior energy management using standard CR123A lithium batteries across the range
- Up to 6 translators per loop
- Up to 128 devices per translator
- Up to 240 devices per hybrid loop
- Wakeup function allows devices to be installed in a small-time window

sygn  **-fi**

THANK YOU

e. enquiry@eurotechfire.com

t. +44 (0) 203 141 0999

www.eurotechfire.com